

08 SEP '11

## MEMO

**To:** PSCC  
**Cc:** Faye Stewart

**From:** Tim Laue

**Memo Re:** - Qualitative Evaluation of Lane County's Public Safety System  
- PSCC Recommendations to the Board of Commissioners

### **1) Work Group Qualitative Evaluation of Community Health and Public Safety**

Attached with the email containing this memo you will find the most recent version of the qualitative/quantitative spreadsheet for the data we have received or generated. We are ready to move forward with the next steps necessary to complete the 2011 work plan and report to the Board of Commissioners. The spreadsheet contains five worksheets (accessed through the tabs along the bottom):

- System Overview
- Youth Services
- DA and Police Services
- Courts and Corrections
- Human Services and Facilities

It is my hope an initial qualitative analysis can be performed by Council members in advance of our next meeting. We can then develop preliminary results for discussion at our meeting on September 15<sup>th</sup>.

Evaluation Instructions – Please use the ‘System Overview’ worksheet for the analysis. The fill color for the cells have been uniformly gray shaded and you will notice that some of the service ‘building blocks’ have been changed or deleted. We have retained cells which contain data. The data is displayed to help with your evaluation. Please evaluate the service elements by selecting cell fill colors to match the key in the upper left hand corner of the spreadsheet. (The fill color icon is next to the font color at the right edge of the toolbar.)

We have also allowed for rating of the service areas themselves. This can be done by ‘color filling’ the service area row in each component grouping.

### Outcomes of Qualitative Evaluation

If all works as hoped, the result will be evaluations at three levels:

- Ratings of the individual service components,
- Ratings of the service areas, and
- Ratings of the service system.

Finally, when rating the cells and areas please rate as many cells as you feel comfortable evaluating. I understand and empathize with the not to wish to comment on areas of others

expertise, but we have repeatedly acknowledged public safety and human services are interdependent, interconnected, and work most effectively when employed in tandem. The assessment of system partners on the different components of the service delivery system is important and our results will have more meaning and better inform the Board of Commissioners (and the larger community) with the greatest participation possible.

## **2) PSCC Recommendations to the Board of Commissioners**

Aside from the evaluation, the other major consideration for the Council concerns recommendations we may choose to convey to the Commissioners. Clearly it will be insufficient to describe the current circumstance and not offer at least some suggestions to help mitigate the situation. Commissioner Stewart and I have discussed this, and we have developed a framework for a stabilization approach over the next few months. Faye has requested a discussion of these suggestions occur at the September 15<sup>th</sup> PSCC meeting.

The approach is to devise a strategy and to implement a plan to generate federal, state, municipal and public support for viable solutions to address the funding crisis in Lane County, and in particular for those services related to public safety and community health. Components of the framework as developed so far are listed below.

Strategic Partners: Governor's Office, Lane County Legislative Delegation, Lane County Congressional Delegation, PSCC, Lane County Sheriff, Lane County District Attorney, Human Services Commission, Metro Partners, Smaller Cities, and other stakeholders, community leaders and interested parties.

### Strategic Goals:

- Legislative action in the 2012 session to develop/modify/mitigate current statutory and rule requirements to enhance Lane County's ability to deliver services.
- Research and coordination with metro partners into the potential of service districts and/or other possible longer term solutions to service delivery.
- Support from county/municipal boards, commissions to assist with finding solutions.
- Public understanding and support.

### Time Frames:

- Near Term – Present to the beginning of the 2012 Legislative Session
- Mid Term – Present thru 2012
- Long Term – Present thru 2015

### Potential Tactical Steps: Near Term

- Interim report from the PSCC to the BCC regarding the status of the service delivery in public safety, youth services and community health to include:
  - Preliminary conclusions of the PSCC [ Sep 30th]
- Board of Commissioners considerations
  - Work-plan adjustments and staff support
  - Optional activities: Announcement/communication/education plans (BCC/CAO)
- BCC/DA/HHS/LCSO research of potential mitigating legislative action.
  - Meeting with Lane County Legislative Delegation (BCC/CAO)

- o Precursors: Conceptual legislative fixes

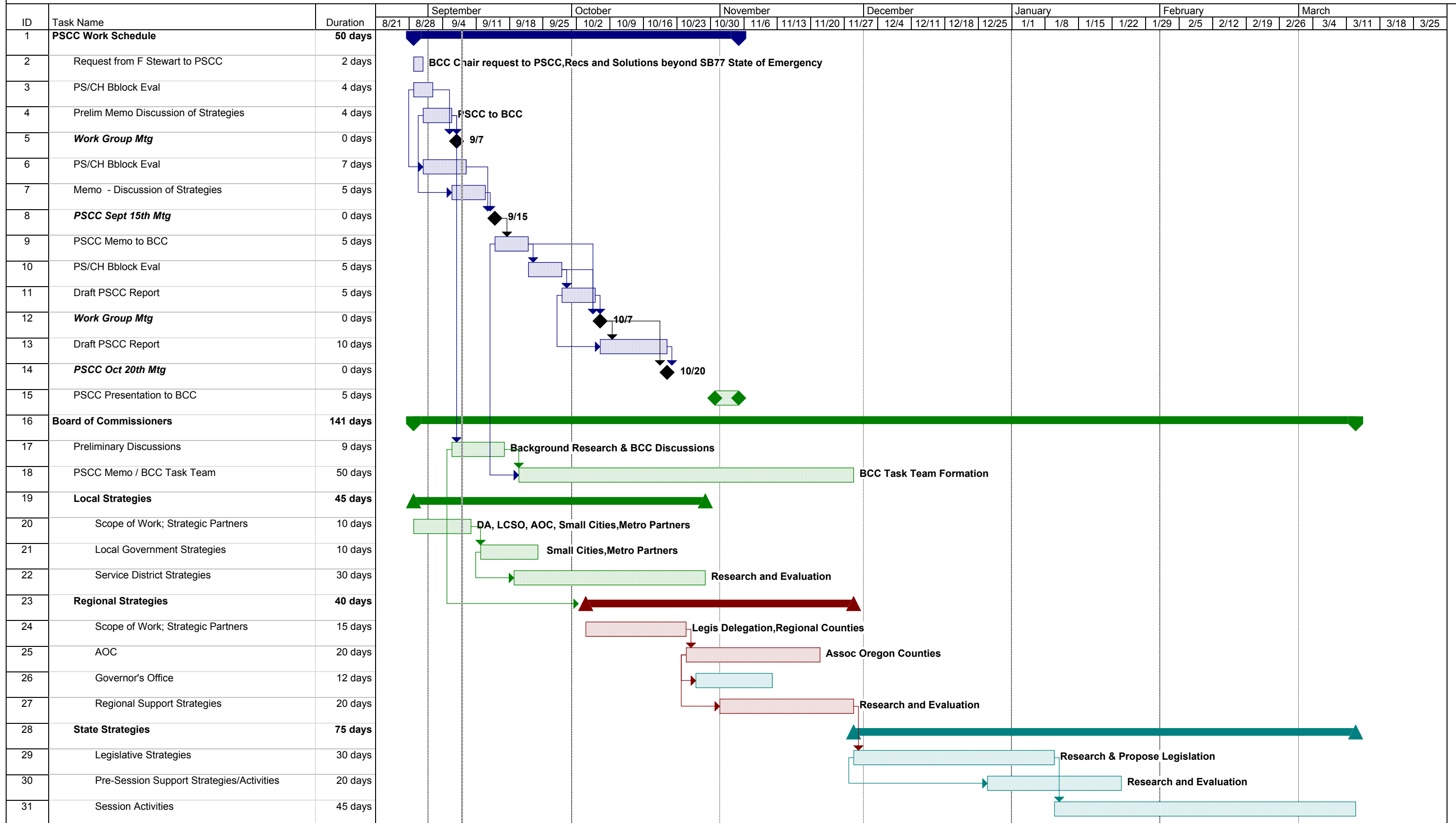
Potential Tactical Steps: Mid Term

- Legislative action during the session (BCC/CAO/Courts/LCSO/DA/HHS)
- Modification to existing ORS and OARs.
- Legislative Proposals
  
- Research/exploration of local service districts
  - o Establishing service districts without taxing authority (BCC action)
  - o Urban transition agreements
  
- Community Education/Outreach Activities

In summary, both the evaluation and the recommendations framework are intended to assist the Coordinating Council in completing our work for this year and advising the Board of Commissioners in addressing the financial circumstance.

Please do not hesitate to get in touch should you have comments, questions or suggestions.

### Lane County Stabilization Approaches



*Draft for Discussion Purposes: Preliminary in scope.*





**Public Safety Analysis  
Youth Services**

9/30/2011

| Rating Key                          | Ramifications |
|-------------------------------------|---------------|
| Adequate Level of Service           |               |
| Minimally Adequate Level of Service |               |
| Less than Adequate Level of Service |               |
| Inadequate Level of Service         |               |
| Emergency Level of Service          |               |
| n/a                                 |               |

| Youth Services                                   | 1980-1989 | 1990-1999 | 2000-2009 | 2010        | Projected |
|--|-----------|-----------|-----------|-------------|-----------|
| Service Description                              | 86 FTE    | 73 FTE    | 89 FTE    | 63 FTE      | 2011      |
| Juvenile Supervision & Support Services          | 43 FTE    | 39 FTE    | 39 FTE    | 26 FTE      | 26 FTE    |
| Admissions/Detention Staffing & Support          | 29 FTE    | 25 FTE    | 26 FTE    | 12 FTE      | 11.5 FTE  |
| Secure Residential Program Staff                 | n/a       | n/a       | n/a       | 13 FTE      | 13 FTE    |
| Research & Grant Writing Position                | n/a       | 1 FTE     | 1 FTE     | 1 FTE       | 1 FTE     |
| Grant Funded Positions                           | n/a       | n/a       | 14 FTE    | 10 FTE      | 4 FTE     |
| Administration                                   | 14 FTE    | 10 FTE    | 9 FTE     | 8 FTE       | 7 FTE     |
| Detention Beds                                   | 50 Beds   | 36 Beds   | 32 Beds   | 16 Beds     | 16 Beds   |
| OYA Beds for Lane County Youth                   | 75 Beds   | 32 Beds   | 40 Beds   | 32 Beds     | 14 Beds   |
| Runaway Intervention                             | Yes       | No        | No        | No          | No        |
| Personal assessment of all charged Juveniles     | Yes       | No        | No        | No          | No        |
| Rural Resource Teams                             | Yes       | No        | No        | No          | No        |
| Rural Youth Counselors                           | n/a       | 2 FTE     | 1 FTE     | .6 FTE      | .6 FTE    |
| Validated Risk Assessments                       | n/a       | Yes       | Yes       | Yes         | Yes       |
| Drug & Alcohol Intervention Programs             | n/a       | Yes       | Yes       | Yes         | Yes       |
| Restorative Justice Program Referrals            | n/a       | 100 Youth | 100 Youth | 29 Youth    | 29 Youth  |
| Drug/Alcohol Treatment Programs                  | n/a       | 14 Beds   | 14 Beds   | 8 Beds      | ?         |
| Misdemeanor Crime Intervention Programs          | n/a       | Yes       | Yes       | No          | No        |
| Juvenile Drug Court                              | n/a       | n/a       | Yes       | Yes         | Yes       |
| Transition/Shelter Beds                          | n/a       | 14 Beds   | 14 Beds   | No          | No        |
| Community Service Crews Days/week                | n/a       | 5         | 7         | 6           | 5         |
| Cognitive Intervention Classes per Year          | 18        | 18        | 16        | 8           | 6         |
| Alternative Education Programs                   | n/a       | 30 Youth  | 100 Youth | 60 Youth    | 45 Youth  |
| Theft Diversion Classes                          | Yes       | Yes       | Yes       | No          | No        |
| Alcohol Diversion Classes                        | Yes       | Yes       | Yes       | No          | No        |
| Community Collaboration & Multicultural Programs | n/a       | Yes       | Yes       | Yes         | Yes       |
| Parent Education & Family Counselling            | Yes       | Yes       | OHP Paid  | OHP Paid    | OHP Paid  |
| Voc Training & Job Placement                     | n/a       | n/a       | 150 youth | 150 youth = | 75 Youth  |

|        |
|--------|
| Notes: |
|        |
|        |
|        |
|        |

**Public Safety Analysis  
District Attorney Police Services**

9/30/2011

| Rating Key                          | Ramifications |
|-------------------------------------|---------------|
| Adequate Level of Service           |               |
| Minimally Adequate Level of Service |               |
| Less than Adequate Level of Service |               |
| Inadequate Level of Service         |               |
| Emergency Level of Service          |               |
| n/a                                 |               |

| District Attorney Services            | 1980-1989 | 1990-1999 | 2000-2009 | 2010 | Projected |
|---------------------------------------|-----------|-----------|-----------|------|-----------|
| <b>Service Description</b>            |           |           |           |      | 2011      |
| Adult Criminal Prosecutions           |           |           |           |      |           |
| Felony Prosecutions                   |           |           |           |      |           |
| Misdemeanor Prosecutions              |           |           |           |      |           |
| Investigative Services                |           |           |           |      |           |
| Medical Examiner/Death Investigations |           |           |           |      |           |
| Victims Services                      |           |           |           |      |           |
| Support/Enforcement Services          |           |           |           |      |           |
| Juvenile Prosecutions                 |           |           |           |      |           |
| KIDs First                            |           |           |           |      |           |

| Police Services                  | 1980-1989 | 1990-1999 | 2000-2009 | 2010 | Projected |
|----------------------------------|-----------|-----------|-----------|------|-----------|
| <b>Service Description</b>       |           |           |           |      | 2011      |
| Rural Patrol                     | n/a       | 26        | 22        | 18   | 22        |
| Residential Deputies             | 9         | 6         | 0         | 3    | 3         |
| Investigations                   | n/a       | 8         | 3         | 6    | 6         |
| Person Crimes                    | n/a       | 7         | 2         | 5    | 5         |
| Property Crimes                  | n/a       | 1         | 1         | 0    | 0         |
| Traffic Enforcement              | n/a       | 12        | 16        | 12   | 6         |
| Search & Rescue                  | n/a       | 1         | 2         | 2    | 1         |
| Marine Patrol                    | n/a       | 2         | 4         | 3    | 3         |
| Forest Patrol                    | 1         | 2         | 7         | 6    | 0         |
| Civil Paper Services             | n/a       | 3         | 2         | 2    | 2         |
| Prevention/Neighborhood Services | n/a       | 0         | 0         | 0    | 0         |

Notes:



**Public Safety Analysis  
Courts Corrections Services**

9/30/2011

| Rating Key                          | Ramifications |
|-------------------------------------|---------------|
| Adequate Level of Service           |               |
| Minimally Adequate Level of Service |               |
| Less than Adequate Level of Service |               |
| Inadequate Level of Service         |               |
| Emergency Level of Service          |               |
| n/a                                 |               |

| Corrections Services             | 1980-1989 | 1990-1999 | 2000-2009 | 2010     | Projected |
|----------------------------------|-----------|-----------|-----------|----------|-----------|
| <b>Service Description</b>       |           |           |           |          | 2011      |
| Lane County Jail                 | 361 / 289 | 289 / 142 | 294 / 405 | 405      | 336       |
| Community Corrections Ctr        | 0 / 64    | 64 / 116  | 122 / 33  | 33       | 33        |
| Forest Work Camp                 | 0 / 30    | 30 / 120  | 0 / 100   | 0        | 0         |
| DOMC Services                    | 0 / 60    | 60 / 160  | 138 / 342 | 365      | 410       |
| CBR Risk Assessments             | n/a       | n/a       |           |          |           |
| Mental Health Special Needs Unit |           |           |           |          |           |
| Sex Offender Treatment Svcs      |           |           |           |          |           |
| Parole and Probation             |           |           | 3348      | 3120     | 3127      |
| Parole Supervision               |           |           |           |          |           |
| SB 1145 Offenders                | n/a       |           |           |          |           |
| Probation Supervision            |           |           |           |          |           |
| Presentencing Investigations     |           |           |           |          |           |
| Electronic Supervision           | 0 / 20    | 20 / 40   | 20 / 50   | 50       | 50        |
| Re-entry Services                | 1 FTE     | 6.5 FTE   | 12 FTE    | 12.5 FTE | 11.5 FTE  |
| Transitional Housing             | 5 Beds    | 46 Beds   | 102 Beds  | 128 Beds | 108 Beds  |
| Transitional Services            | 2 FTE     | 3 FTE     | 5 FTE     | 7.5 FTE  | 6.5 FTE   |
| Corrections Staff & Support Svcs |           |           |           |          |           |

| Courts Services                    | 1980-1989 | 1990-1999 | 2000-2009 | 2010 | Projected |
|------------------------------------|-----------|-----------|-----------|------|-----------|
| <b>Service Description</b>         |           |           |           |      | 2011      |
| Adult Courts                       |           |           |           |      |           |
| Drug Court                         |           |           |           |      |           |
| Mental Health Court                |           |           |           |      |           |
| Juvenile Court                     |           |           |           |      |           |
| Florence Justice Court             |           |           |           |      |           |
| Oakridge Justice Court             |           |           |           |      |           |
| Pre-Trial Services                 |           |           |           |      |           |
| CBR Risk Assessments               |           |           |           |      |           |
| Public Defender Services           |           |           |           |      |           |
| Adult Court Appointed Services     |           |           |           |      |           |
| Juvenile Court Appointed Attorneys |           |           |           |      |           |

**Notes:**

**Public Safety Analysis  
Human Services Facilities**

9/30/2011

| Rating Key                          |
|-------------------------------------|
| Adequate Level of Service           |
| Minimally Adequate Level of Service |
| Less than Adequate Level of Service |
| Inadequate Level of Service         |
| Emergency Level of Service          |
| n/a                                 |

| Ramifications |
|---------------|
|               |
|               |
|               |
|               |
|               |
|               |

| Human Services                           | 1980-1989 | 1990-1999 | 2000-2009 | 2010 | Projected |
|--|-----------|-----------|-----------|------|-----------|
| <b>Service Description</b>               |           |           |           |      | 2011      |
| Detoxification Services                  |           |           |           |      |           |
| Mental Health Treatment                  |           |           |           |      |           |
| Substance Abuse/Addiction Treatment      |           |           |           |      |           |
| Crisis Intervention                      |           |           |           |      |           |
| CAHOOTS                                  |           |           |           |      |           |
| Emergency Shelter - Looking Glass        |           |           |           |      |           |
| Emergency Shelter - St Vincent de Paul   |           |           |           |      |           |
| Rural & Urban Emergency Services         |           |           |           |      |           |
| Hunger Relief / Food Distribution        |           |           |           |      |           |
| Homeless Camping Program                 |           |           |           |      |           |
| Domestic Violence & Abuse Services       |           |           |           |      |           |
| Shelter & Transitional Housing           |           |           |           |      |           |
| Family Counseling Services               |           |           |           |      |           |
| Primary Health Care                      |           |           |           |      |           |
| Supportive Housing/Transitional Services |           |           |           |      |           |
| Developmental Disabilities               |           |           |           |      |           |
| Homeless Youth                           |           |           |           |      |           |
| Mental Illness                           |           |           |           |      |           |
| HIV                                      |           |           |           |      |           |
| Child & Youth Development                |           |           |           |      |           |
| Adult & Youth Employment Services        |           |           |           |      |           |
| Egan Warming Center                      |           |           |           |      |           |
| Senior Services and Support              |           |           |           |      |           |
| Youth Services                           |           |           |           |      |           |
| Youth Day Services & Treatment           |           |           |           |      |           |
| Safe & Sound                             |           |           |           |      |           |
| Looking Glass Youth Shelter              |           |           |           |      |           |

| Facilities                     | 1980-1989 | 1990-1999 | 2000-2009 | 2010 | Projected |
|--------------------------------|-----------|-----------|-----------|------|-----------|
| <b>Description</b>             |           |           |           |      | 2011      |
| Lane County Sheriff's Office   |           |           |           |      |           |
| Jail                           | 361 / 311 | 311 / 475 | 475 / 507 | 507  | 507       |
| DOMC                           | 0 / 60    | 60 / 160  | 160 / 342 | 365  | 410       |
| Community Corrections Centerr  | 0 / 64    | 64 / 116  | 116 / 122 | 122  | 33        |
| Forest Work Camp               | 0 / 30    | 30 / 120  | 120       | 0    | 0         |
| Police Facilities              |           |           |           |      |           |
| Court Facilities               |           |           |           |      |           |
| Parole and Probation           |           |           |           |      |           |
| Juvenile Corrections, Services |           |           |           |      |           |
| Detention                      |           |           | 96        | 80   | 80        |
| Shelter (boys)                 |           |           | 12        | 12   | 12        |
| Shelter (girls)                |           |           | 7         | 7    | 7         |
| AOD Residential (boys)         |           |           | 14        | 14   | 14        |
| AOD Residential (girls)        |           |           | 7         | 7    | 7         |
| Lane Close Custody Treatment   |           |           | 0         | 16   | 16        |

**Public Safety Analysis  
Human Services Facilities**

9/30/2011

|  |  |  |    |    |    |
|--|--|--|----|----|----|
| State Youth Resources Available to Lane County     |  |  |    |    |    |
| Oregon Youth Authority Close Custody               |  |  | 75 | 75 | 75 |
| Health and Human Services                          |  |  |    |    |    |
| Lane County Mental Health                          |  |  |    |    |    |
| Lane County Public Health and H&HS Administration  |  |  |    |    |    |
| Transitional Housing and Services - Sponsors, Inc. |  |  |    |    |    |

Notes:

---



---



---